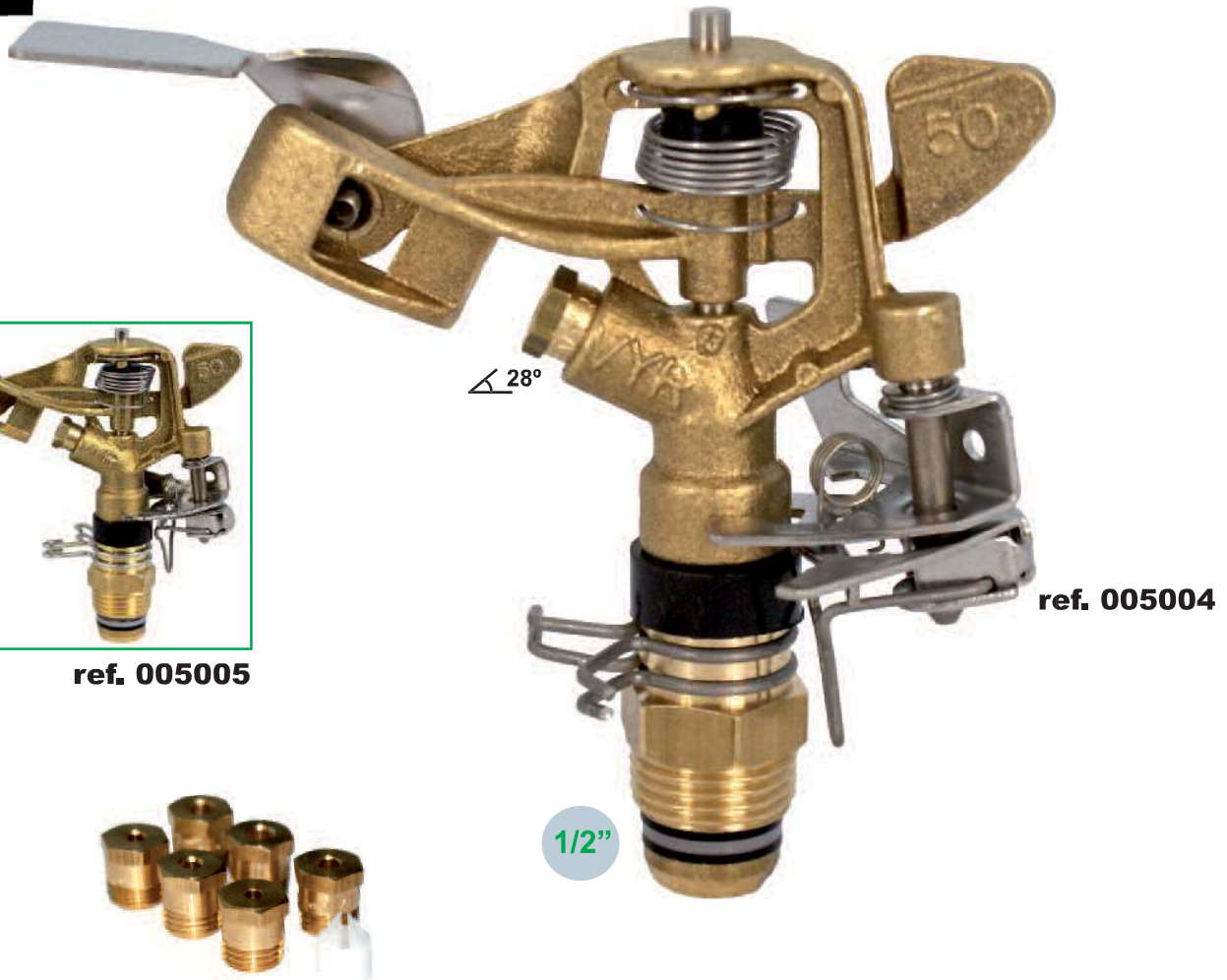




ref. 005005



ref. 005004



VYR-50

Part circle AG

General properties:

- Riser-mounted impact sprinkler for gardening, agriculture, floriculture and greenhouses.
- 1/2" male connection.
- Made of brass and stainless steel.
- High-resistance rotating joints.
- Adjustable deflector plate.
- Irrigation area control system by adjustment of rotating clips.
- Adjustable jet breaker diffuser pin.
- This sprinkler is strong and durable enough to work for years in urban gardens in punishing conditions, such as vandalism and impact from maintenance equipment.

Technical specifications:

- Range distance: 9 - 14 m.
- Flow: 240 - 1,440 l/h.
- Working pressure: 1 - 4 bar.
- Area: Full or part circle.
- Nozzles: A single-jet nozzle.
- Trajectory angles: 28°.
- Maximum stream height: 2,6 m.
- Rotation time: Depending on the pressure and the nozzles, the rotation will be constant and continuous.
- Uniformity coefficient higher than 90% in areas of 10x10R, 12x12T and 12x13T.

Applications:

- Public and private gardens.
- Horticultural plantations, floriculture and fruit trees.

Measurements:

- Width: 12 cm.
- Sprinkler height: 13 cm.
- Weight: 220 g.
- Units per box: 50.

Options:

- Threads in BSP or NPT under demand.
- Special design with a threaded shaft for fitting to the VYR-961 pop-up head.
- Self-compensating flow control valves of 1.5 and 2 bar.
- Assembled as a "complete support kit" on a 1.3 or 0.7 m galvanized stake with microtube and connectors.
- Assembled as a "complete support kit" on a brass, aluminium or plastic spike.
- Assembled as a "complete support kit" on an aluminium base.

Models:

- **Ref. 005004:** Part (or full) circle with deflector.
- **Ref. 005005:** Part (or full) circle without deflector.



VYR-50

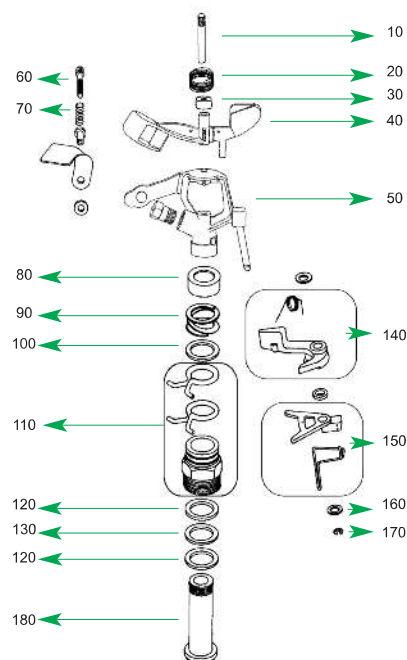
Tables & Charts

Technical guidance table for CU's of VYR-50

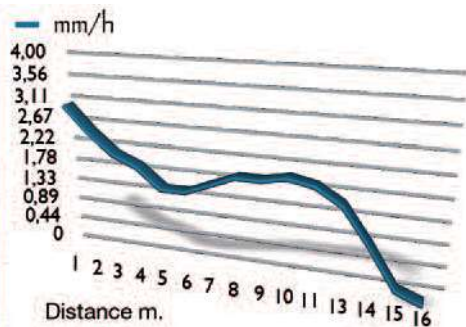
BOQUILLA	P (Bar)	Q (l/h)	D (m) Radio	Espaciamento (m) / Precipitación (mm/h)					
				9x9 Rect.	9x9 Triang.	10x10 Rect.	10x10 Triang.	10x12 Triang.	12x12 Triang.
3,6 mm.	2,5	775	10	9,6	8,8	7,8	7,2	5,3	5,0
	3	849	10	10,5	9,7	8,5	7,8	5,8	5,4
	3,5	917	10	11,3	10,5	9,2	8,5	6,3	5,9
4,0 mm.	2,5	957	10	11,8	10,9	9,6	8,8	6,5	6,1
	3	1048	10	12,9	12,0	10,5	9,7	7,2	6,7
	3,5	1132	11	14,0	12,9	11,3	10,5	7,7	7,3
4,4 mm.	2,5	1158	11	14,3	13,2	11,6	10,7	7,9	7,4
	3	1268	11	15,7	14,5	12,7	11,7	8,7	8,1
	3,5	1370	12	16,9	15,6	13,7	12,7	9,4	8,8

P: Pressure D: Distance (Range Radius).
Q: Flow at real test

CU<85% CU 85-88% CU 88-92% CU>92%



BAR	3
Flow	1065 L/h
Nozzles	4,0 mm
Center	VYR
Rotation velocity	17 sec/rev.
Height	100 cm
Duration	60 min.
T°	15°C
Wind velocity	0 m/sec.
Date	03/02/2011



Easy part-circle adjustment

Performance nozzle tables of VYR-50

Bars	2,5 mm.		2,8 mm.		3 mm.		3,2 mm.		3,5 mm.		4 mm.		4,5 mm.	
	Lit./h.	Ø mts.	Lit./h.	Ø mts.	Lit./h.	Ø mts.	Lit./h.	Ø mts.	Lit./h.	Ø mts.	Lit./h.	Ø mts.	Lit./h.	Ø mts.
1	240	18	310	19	360	19	400	20	480	20	620	21	760	22
1,5	300	19	370	19	440	20	480	21	570	21	750	22	910	23
2	340	20	420	20	500	21	550	21	660	22	850	23	1.030	24
2,5	380	21	470	21	560	22	600	22	730	23	950	24	1.150	25
3	410	22	520	22	610	23	660	23	800	23	1.040	24	1.270	25
3,5	450	23	560	23	650	23	710	23	860	24	1.100	25	1.350	26
4	480	24	600	24	690	24	760	24	910	25	1.180	26	1.440	27



Solamente para aspersores circulares. Only for full circle series.

STANDARD

Ø mts. : Diameter of coverage

- Sprinklers will be supplied with standard nozzles unless otherwise specified.

- In order to calculate the flow, add the flows of the two nozzles. The range of the rear nozzle must be less than that of the main nozzle.

